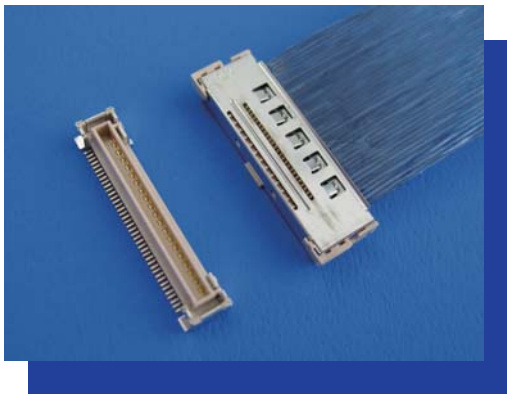


# FPL Standard type 0.5mm Pitch Right Angle Type



- Cable assembly by blanket soldering with different size cables for SGC and Discrete wire
- Mated contact protected from flux overflow by special design
- Click sensation provides audible and tactile check for proper mating
- Mating Height : 4.3mm
- Soldering connection

## 【Number of Position】

30p, 40p, 50p

## 【Ordering Code】

PLUG Connector Set (for Cable)

Parts Ordering (HOUSING)

**20320- \* \*\* T - \*\***  
 ① ② ③ ④

Parts Ordering (SHELL)

**1968-0 \*\* 2**  
 ②

RECEPTACLE Connector Set  
 (for PC Board)

**20323- \* \*\* E - \* \* \***  
 ① ② ③ ⑤ ⑥ ⑦ ⑧

## 【Applicable Cable Size】

SGC	AWG #32, #34, #36, #40
TWINCOAX	AWG #40
DISCRETE	AWG #32, #36

①	HOUSING Material	<b>0</b>	—
		<b>R</b>	Red Phosphorus Free (30p, 40p only)
②	POS.	<b>30:</b> 30p, <b>40:</b> 40p, <b>50:</b> 50p	
③	Packaging	<b>T</b>	トレイ
		<b>E</b>	インボステーブ
④	PLUG C/T Plating (Mating Side)	<b>11</b>	Au (0.2 μm MIN.)
		<b>41</b>	Au (0.3 μm MIN.)
⑤	DATE CODE	—	Without
		<b>D</b>	With
⑥	RECEPTACLE C/T Plating (Mating Side)	<b>1</b>	Au (0.2 μm MIN.)
		<b>4</b>	Au (0.3 μm MIN.)
⑦	BOSS	<b>1</b>	With
		<b>2</b>	Without
⑧	ADHESION TAPE	<b>NON</b>	L= 6.0±1.0
		<b>1</b>	L= 18.0±1.0
		<b>2</b>	NOTHING

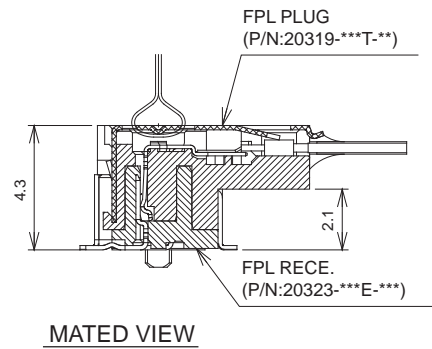
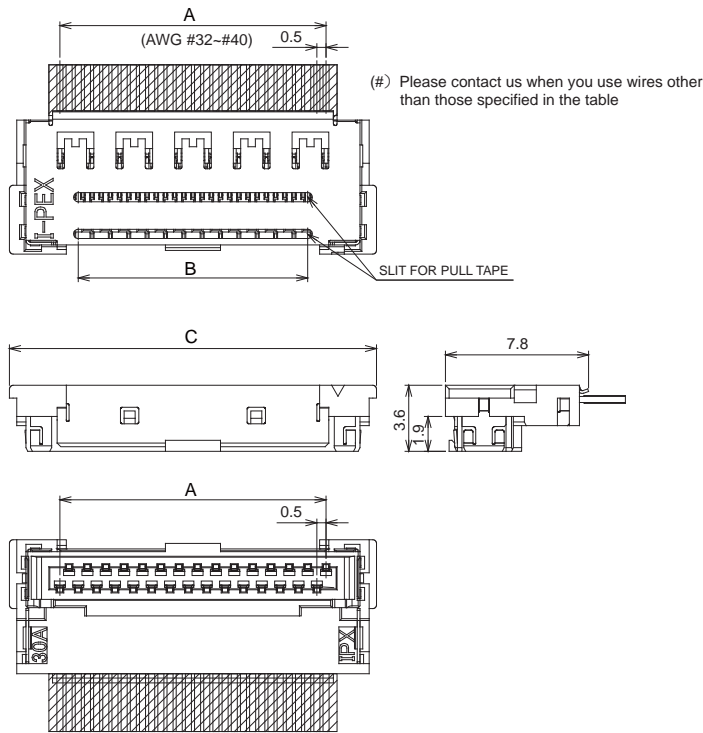
## 【Material / Finish】

Product	Parts	Material	Plating / Color
PLUG	HOUSING	LCP UL94V-0	NATURAL
	CONTACT	COPPER ALLOY	Au
	SHELL	COPPER ALLOY	Sn-Cu
RECEPTACLE	HOUSING	LCP UL94V-0	NATURAL
	CONTACT	COPPER ALLOY	Au
	HOLD DOWN	COPPER ALLOY	Sn-Cu

# PLUG

Set P/N: 20319-\*\*\*T-\*\*

POS.	A	B	C	PULL TAPE WIDTH
30p	14.5	12.5	20.0	12.0
40p	19.5	12.5	25.0	12.0
50p	24.5	19.5	30.0	19.0



# RECEPTACLE

POS.	PART NO.	A	B	C	D	E	F
30p	20323-30E-***	14.5	19.4	16.25	15.3	12.5	15.2
40p	20323-40E-***	19.5	24.4	21.25	20.3	17.5	20.2
50p	20323-50E-***	24.5	29.4	26.25	25.3	22.5	25.2

