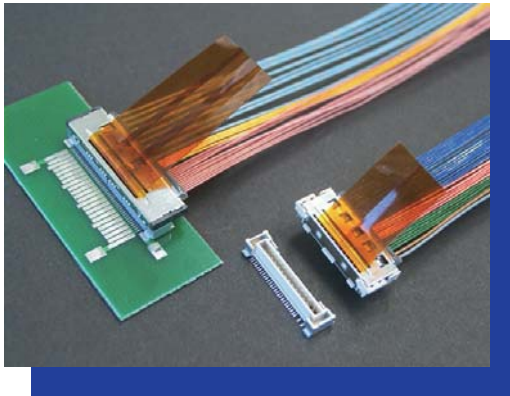


FPL Hybrid type

0.5mm Pitch

Right Angle type



- Cable assembly by blanket soldering with different size cables for SGC and Discrete wire
- Mated contact protected from flux overflow by special design
- Click sensation provides audible and tactile check for proper mating
- Mating Height : 4.3mm
- Soldering connection

【Number of Position】

28p, 32p, 40p

【Applicable Cable Size】

| | |
|----------|------------------------|
| SGC | AWG #32, #34, #36, #40 |
| TWINCOAX | AWG #40 |
| DISCRETE | AWG #28, #30, #32, #36 |

【Ordering Code】

PLUG Connector Set (for Cable)

Parts Ordering (HOUSING)

20322-0 ** T - 11
① ②

Parts Ordering (SHELL)

1968-0 ** 2
③

RECEPTACLE Connector Set
(for PC Board)

20324-0 ** E - 1 *
① ② ④ ⑤

| | | | |
|---|------------|---------------------------------------|-------------|
| ① | POS. | 28: 28p, 32: 32p, 40: 40p | |
| ② | Packaging | T | Tray |
| | | E | Emboss Tape |
| ③ | SHELL POS. | 30: for 28p, 40: for 32p, 50: for 40p | |
| ④ | DATE CODE | - | Without |
| | | D | With |
| ⑤ | BOSS | 1 | With |
| | | 2 | Without |

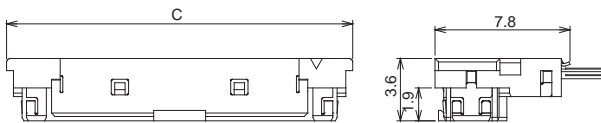
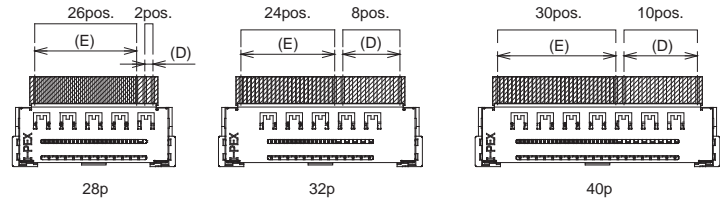
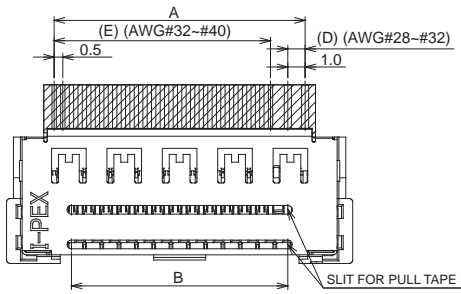
【Material / Finish】

| Product | Parts | Material | Plating / Color |
|------------|-----------|--------------|-----------------|
| PLUG | HOUSING | LCP UL94V-0 | NATURAL |
| | CONTACT | COPPER ALLOY | Au |
| | SHELL | COPPER ALLOY | Sn-Cu |
| RECEPTACLE | HOUSING | LCP UL94V-0 | NATURAL |
| | CONTACT | COPPER ALLOY | Au |
| | HOLD DOWN | COPPER ALLOY | Sn-Cu |

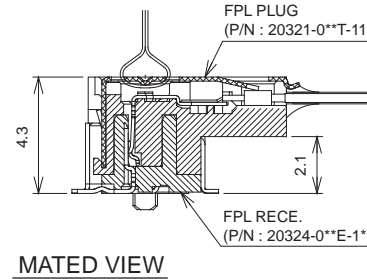
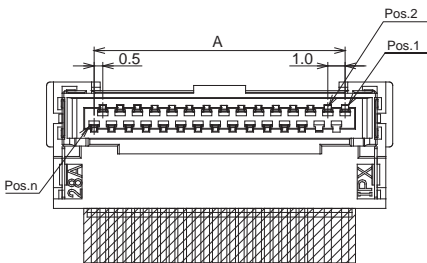
PLUG

Set P/N: 20321-0**T-11

| POS. | A | B | C | D | E | PULL TAPE WIDTH |
|------|------|------|------|-----|------|-----------------|
| 28p | 14.5 | 12.5 | 20.0 | 1.0 | 12.5 | 12.0 |
| 32p | 19.5 | 12.5 | 25.0 | 7.0 | 11.5 | 12.0 |
| 40p | 24.5 | 19.5 | 30.0 | 9.0 | 14.5 | 19.0 |



(#) Please contact us when you use wires other than those specified in the table



RECEPTACLE

| POS. | PART NO. | A | B | C | D | E | F | G | H |
|------|---------------|------|------|-------|------|------|-----|------|------|
| 28p | 20324-028E-1* | 14.5 | 19.4 | 16.25 | 15.3 | 12.5 | 1.0 | 12.5 | 15.2 |
| 32p | 20324-032E-1* | 19.5 | 24.4 | 21.25 | 20.3 | 17.5 | 7.0 | 11.5 | 20.2 |
| 40p | 20324-040E-1* | 24.5 | 29.4 | 26.25 | 25.3 | 22.5 | 9.0 | 14.5 | 25.2 |

