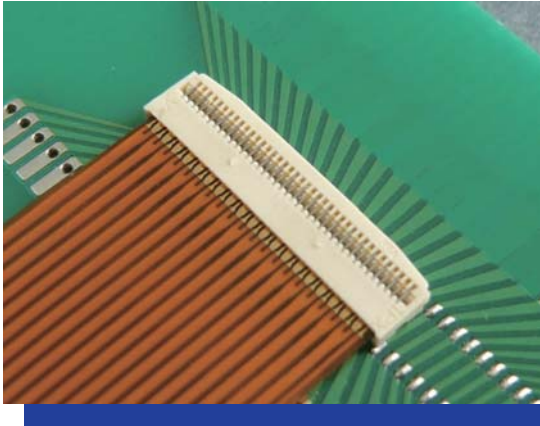


MINIFLEX3-BFN

0.3mm Pitch

Horizontal Type
Rear Drive Locking Type
Narrow Type



- Profile Height : 0.9mm
- Depth : 3.0mm (with actuator closed) Narrow Type
The base projected area is reduced 55% (compared with MINIFLEX3-BF)
- Higher reliability structure
- Enhanced temporary hold mechanism by LIF structure
- Prevention of half lock by the unique actuator design
- Applicable for 0.2mm FPC thickness.
Smooth operation for FPC insertion.

【Number of Positions】

25p, 27p, 29p, 33p, 39p
(Projected : 15p ~ 60p)

【Applicable Thickness of FPC】

FPC Thickness	0.2 ±0.03mm
---------------	-------------

【Ordering Code】

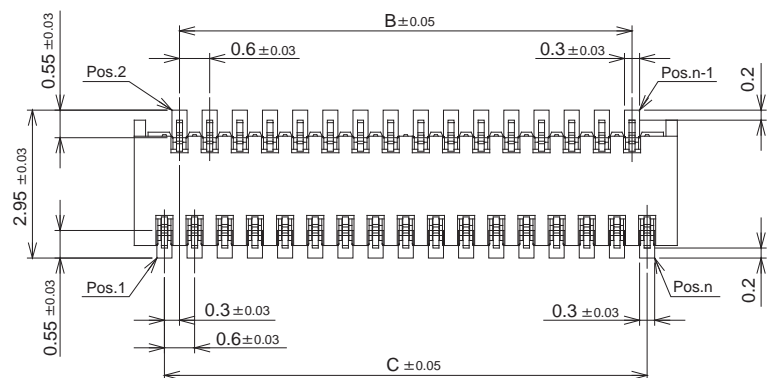
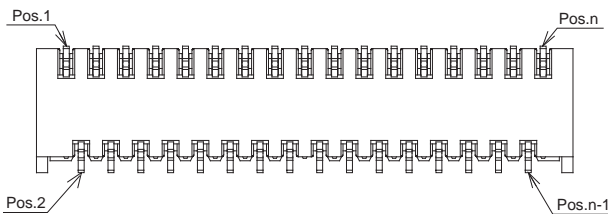
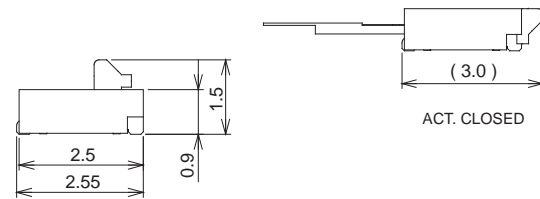
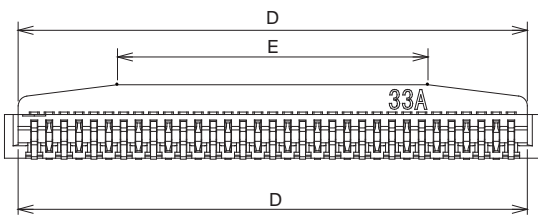
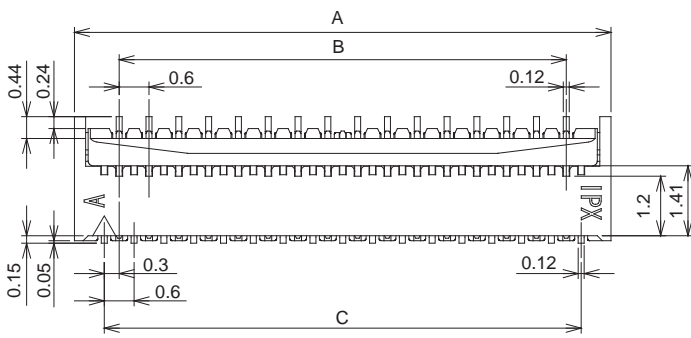
20527- 0 ** E - **01**
① ②

①	POS.	25: 25pos 27: 27pos 29: 29pos 33: 33pos 39: 39pos	
②	Packaging	E	Emboss Tape

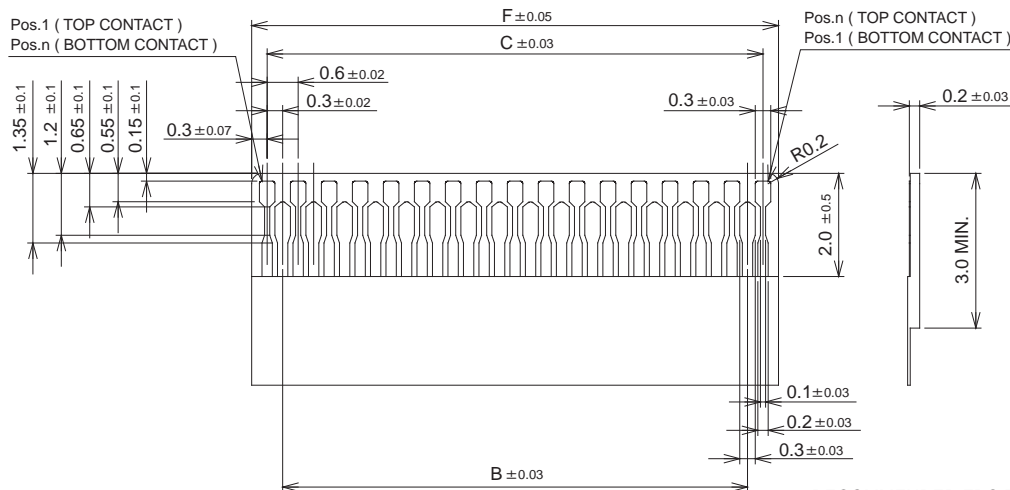
【Material / Finish】

Parts	Material	Plating / Color
HOUSING	LCP UL94V-0	NATURAL
ACTUATOR	LCP UL94V-0	NATURAL
CONTACT A	COPPER ALLOY	Au
CONTACT B	COPPER ALLOY	Au (with Ni stripe)

POS.	A	B	C	D	E
25p	8.4	6.6	7.2	7.85	3.85
27p	9.0	7.2	7.8	8.45	4.45
29p	9.6	7.8	8.4	9.05	5.05
33p	10.8	9.0	9.6	10.25	6.25
39p	12.6	10.8	11.4	12.05	8.05



RECOMMENDED PATTERN LAYOUT



RECOMMENDED FPC PATTERN