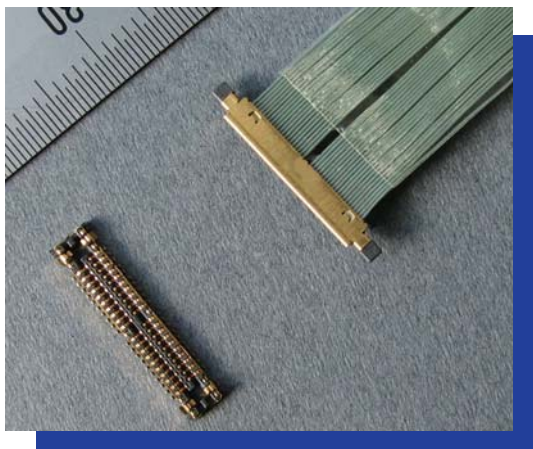


CABLINE[®]-MS

0.3mm Pitch Right Angle Stacking Type



- Mating Height : 1.6mm
- Applicable Cable Size : SGC AWG #44, AWG#42
- W-Point Contact with High mating reliability
- 2.35mm Wide Slim PLUG Going through Small Hinge Hole after Cabling
- Easy Mating Operation with PLUG Guide Part-Design
- Soldering connection

【Number of Position】

32p, 40p, 44p, 50p

【Ordering Code】

PLUG Connector Set (for Cable)

Parts Ordering (HOUSING)

20395- 0 ** T - **
 ① ② ③

Parts Ordering (METAL COVER)

2280-0 ** - **
 ① ④

RECEPTACLE Connector Set
(for PC Board)

20394- 0 ** E - * *
 ① ② ③④

【Applicable Cable Size】

SGC	AWG #44 (32p, 40p, 44p, 50p)
	AWG #42 (40p, 44p, 50p)

①	POS.	32: 32pos 40: 40pos 44: 44pos 50: 50pos
②	Packaging	T Tray
③	Applicable Cable Size	NON 32p, 40p (for AWG#44), 44p, 50p
		04 40p (for AWG#42)
④	METAL COVER Finish	01 Sn (32p, 40p only)
		02 Au

①	POS.	32: 32pos 40: 40pos 44: 44pos 50: 50pos
②	Packaging	E Emboss Tape
③	Nickel Barrier	0 Without
		1 With
④	SHELL Finish	1 Sn (With V/C) ※32p, 40p Only
		2 Au (With V/C)
	VACUUM CLIP (V/C)	3 Sn (Without V/C) ※32p, 40p Only
		4 Au (Without V/C) ※40p, 44p Only

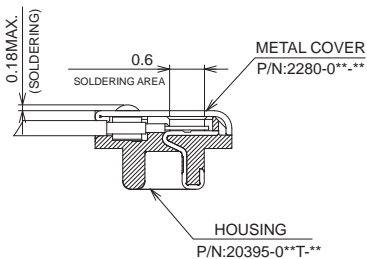
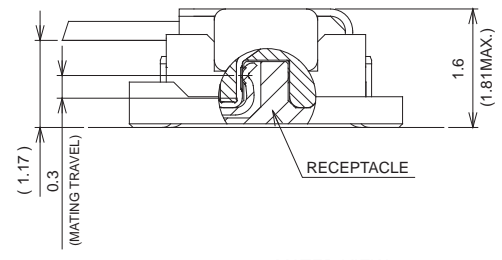
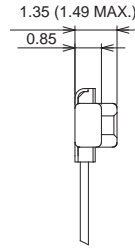
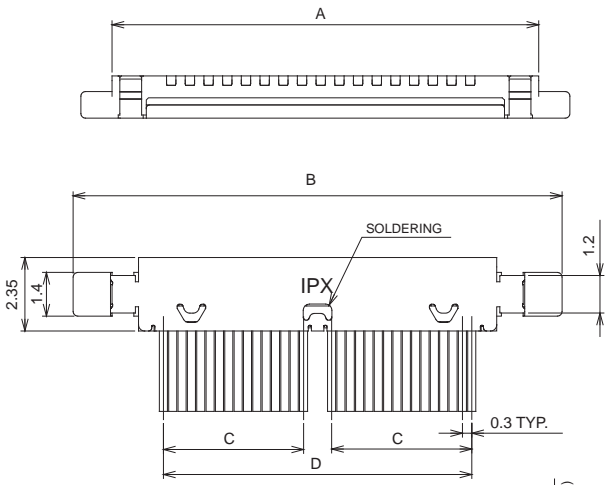
【Material / Finish】

Product	Parts	Material	Plating / Color
PLUG	HOUSING	LCP UL94V-0	BLACK
	CONTACT	COPPER ALLOY	Au
	METAL COVER	COPPER ALLOY	Sn or Au
RECEPTACLE	HOUSING	LCP UL94V-0	BLACK
	CONTACT	COPPER ALLOY	Au
	SHELL	COPPER ALLOY	Sn or Au
	VACUUM CLIP	LCP UL94V-0	BLACK

PLUG

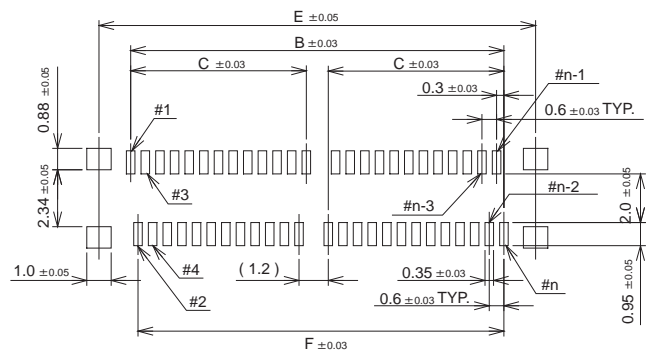
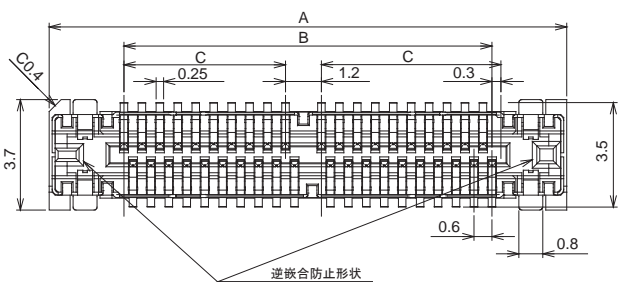
Set P/N: 20396-0**T

POS.	A	B	C	D	E	F
32p	13.7	15.7	4.5	9.9	11.9	10.9
40p	16.1	18.1	5.7	12.3	14.3	13.3
44p	17.3	19.3	6.3	13.5	15.5	14.5
50p	19.1	21.1	7.2	15.3	17.3	16.3

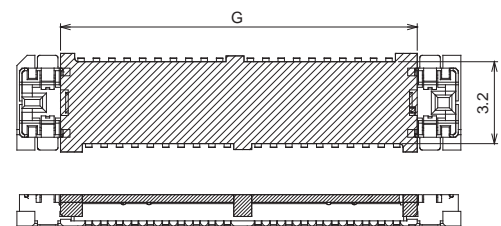
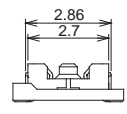
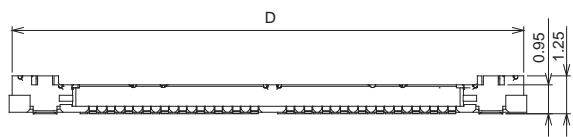


RECEPTACLE

POS.	PART NO.	A	B	C	D	E	F	G
32p	20394-032E-**	14.9	9.9	4.2	14.7	12.5	9.6	11.5
40p	20394-040E-**	17.3	12.3	5.4	17.1	14.9	12.0	13.9
44p	20394-044E-**	18.5	13.5	6.0	18.3	16.1	13.2	15.1
50p	20394-050E-**	20.3	15.3	7.2	20.1	17.9	15.0	16.9



RECOMMENDED FOOTPRINT PATTERN



With VACUUM CLIP