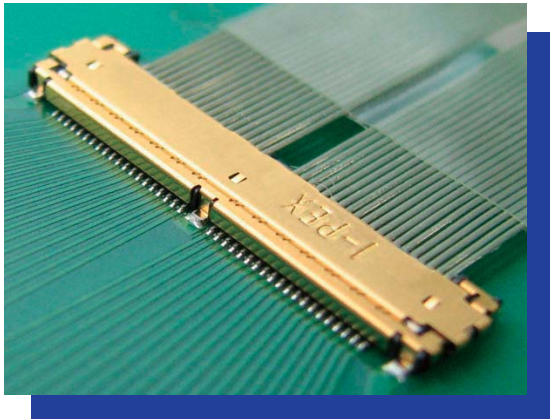


# CABLIN<sup>®</sup>-UB

0.4mm Pitch

Right Angle Stacking Type



- Mating Height : 1.0mm
- Applicable Cable Size : SGC AWG#44, AWG#42
- W-Point Contact with High mating reliability
- Enhanced Shielding and Grounding performance
- Guide to insure an easier mating process
- Soldering connection

### 【Number of Position】

20p, 30p, 36p, 40p

### 【Ordering Code】

PLUG Connector Set (for Cable)

Parts Ordering (HOUSING)

**20419-0 \*\* T**  
① ②

Parts Ordering (Cover)

**2452-0 \*\***  
①

RECEPTACLE Connector Set  
(for PC Board)

**20418-0 \*\* E - 00**  
① ②

### 【Applicable Cable Size】

SGC	AWG #42, #44
-----	--------------

①	POS.	20: 20pos	30: 30pos	36: 36pos	40: 40pos
②	Packaging	T	Tray		

①	POS.	20: 20pos	30: 30pos	36: 36pos	40: 40pos
②	Packaging	E	Emboss Tape		

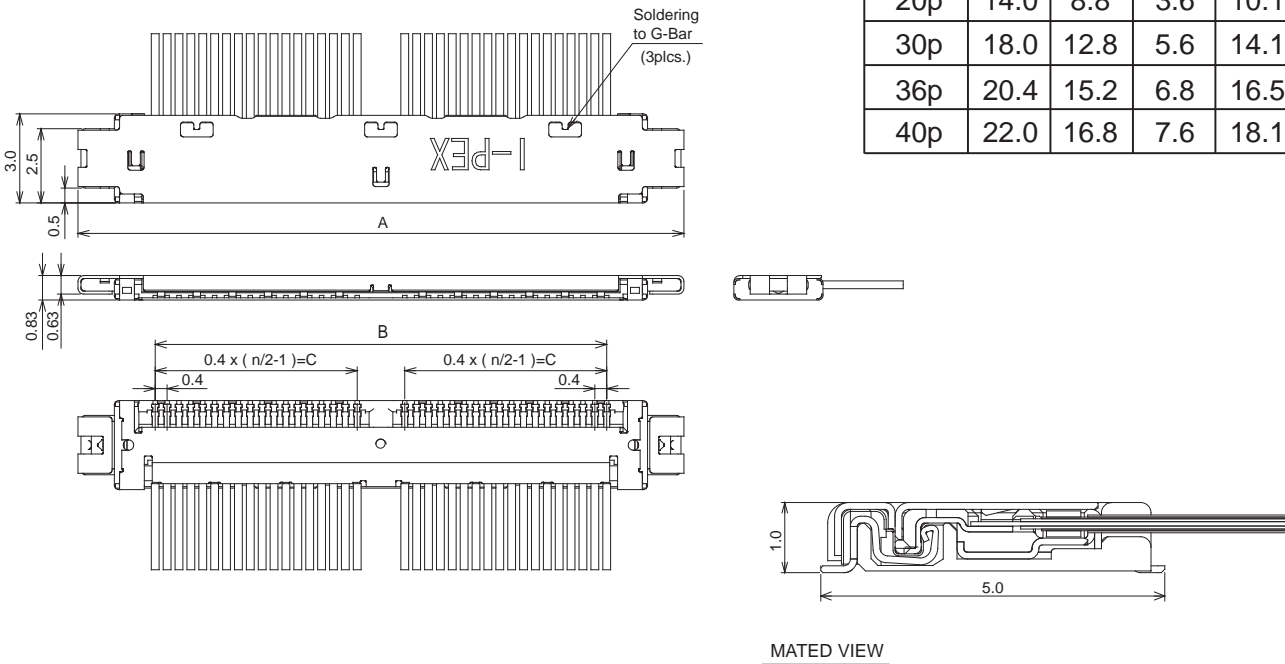
### 【Material / Finish】

Product	Parts	Material	Plating / Color
PLUG	HOUSING	LCP UL94V-0	BLACK
	CONTACT	COPPER ALLOY	Au
	SHELL	STAINLESS STEEL	-
	COVER	STAINLESS STEEL	Au
RECEPTACLE	HOUSING	LCP UL94V-0	BLACK
	CONTACT	COPPER ALLOY	Au
	SHELL	STAINLESS STEEL	Au

**PLUG**

Set P/N: 20420-0\*\*

POS.	A	B	C	D
20p	14.0	8.8	3.6	10.1
30p	18.0	12.8	5.6	14.1
36p	20.4	15.2	6.8	16.5
40p	22.0	16.8	7.6	18.1



**RECEPTACLE**

POS.	PART NO.	A	B	C	D	E	F	G	H	J	K
20p	20418-020E-00	11.35	9.4	3.6	8.8	11.35	11.6	13.2	2	2.4	17.0
30p	20418-030E-00	15.35	13.4	5.6	12.8	15.35	15.6	17.2	4	4.8	21.0
36p	20418-036E-00	17.75	15.8	6.8	15.2	17.75	18.0	19.6	5	6	23.4
40p	20418-040E-00	19.35	17.4	7.6	16.8	19.35	19.6	21.2	5	6	25.0

